

# 1053

The combination lock 1053 is part of the **10 Series** by Serrature Meroni: a wide range of combination locks that cover all applications, functions, and are **suitable for wooden, metal, glass** furniture.

1043 is the ideal solution for the installation **on cabinets and lockers with a tambour door** and it is available with plastic cover and knob (Standard line). The lock is provided with the maintenance key for **secret code recovery**. The 10 Series locks are available lock in **multi-user or single-user** options.

## combilocks



### APPLICATION AND FUNCTION

1053 is a vertical combination lock for lockers or cabinets with **tambour doors** and the ideal solution for places where a easy to use and smart closure system is fundamental. It is a keyless lock and can be opened thanks to a 4 digits pre-set secret code. 1052 is suitable for the installation on **wooden tambour doors**. It is available for various thicknesses.

### MATERIAL AND DESIGN

Compact and versatile shape are the main feature of 1053. The grooved and ergonomic lock is in plastic ad the cover. Finiture

### FINISHES

Available in 2 standard finishes: black and white.

### MAINTENANCE KEY

The lock kit includes a simple system for the secret code recovery with a maintenance key (or special plastic stick tool in the “private mode”).

### MULTI-USER AND SINGLE-USER FUNCTIONS

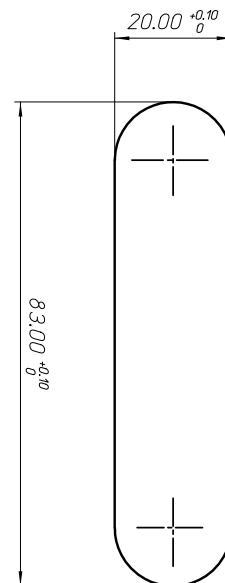
The 1053 combination lock can be set to work both in public mode and private mode depending on the type of application. The “public mode” is the solution for multi-user environments while the “personal mode” is suitable for single-user furniture.

### STANDARD LINE

The combination lock is available in Standard line (plastic cover and knob).

## HOLE TEMPLATE

The holing dimensions are 20mm and 83mm for both the horizontal and vertical installation positions. The hole template is equal for most of the locks: unique template for metal, glass and wood. The following locks, in both lines (Standard or Design), have the same hole template: 1033, 1051, 1052, 1053, 1067, 1075, 1077.



## PERSONAL AND PUBLIC

The system to switch between personal mode and public mode or viceversa is on the lock rear side. A lever activates the switching from one mode to another thanks to a mechanical procedure (see the instructions) which includes several steps.

### FEATURES:

- Vertical lock with locking system for tambour doors
- Various thicknesses for wood
- Available in right and left versions
- Application: furniture with wooden tambour doors
- Available in Standard line (plastic cover and knob)
- Grooved and ergonomic knob for a perfect grip
- Knob with click sound effect for the Design line locks
- 4 digits combination wheels, easy to use
- Maintenance key for secret code recovery
- Unique lock with multi-user/single-user selectable options
- 90° closure

### THICKNESS:

wood (w)
16-20mm
20-24mm
24-30mm
30-36mm

